



TR-MONITOR-10

Intelligent Ten Input Monitor Module

The TR-MONITOR-10 is a 10 point addressable monitor module for use with the Triga Series fire alarm control panels (FACPs). The TR-MONITOR-10 acts as an interface to contact devices, such as waterflow switches and pull stations. The multiple input design allows for easy and efficient installation.

The TR-MONITOR-10 supports ten Class B supervised contact inputs or five Class A supervised contact inputs. Conventional 4-wire smoke detectors can be monitored for alarm and trouble conditions.

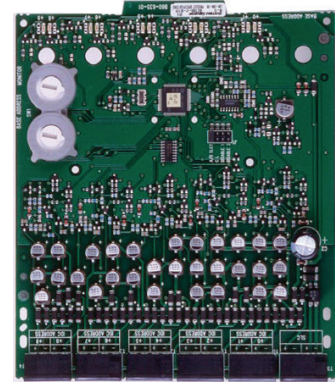
INSTALLATION

You can install up to two TR-MONITOR-10 modules in an accessory cabinet (TR-IDP-ACB). The accessory cabinet has a built-in mounting plate that positions the module boards so that all of the status indicators are visible.

COMPATIBILITY

The TR-MONITOR-10 is compatible with the following Triga Series FACPs:

- TR-2100R / ITR-2100B
- TR-2100ECSR / TR-2100ECSB
- TR-R2100R / TR-R2100B



TR-MONITOR-10

FEATURES & BENEFITS

- 10 contact monitor
- Support for Class A and Class B wiring
- Fully supervised
- LED indicator for each input
- Disable unused addresses
- Mount up to two modules in one accessory cabinet (P/N TR-ACB)
- Rotary address switches for fast installation
- Removable 12 to 18 AWG plug in terminal blocks for easy wiring and troubleshooting
- Mounting hardware included
- UL Listed
- FM Approved



Technical Specifications

PHYSICAL

Dimensions: 6.8" H x 5.8"W x 1.25" D

Shipping Weight: 6.3oz (196g)

ELECTRICAL RATINGS

Wire Gauge: 12-18 AWG

Operating Voltage: 15 to 32VDC

Standby Current: 1.6mA

Alarm Current: 55mA max. (Assumes all ten LEDs solid on)

Initiating Device Circuit Voltage: 10.2VDC max

Initiating Device Circuit Current: 240µA max

SLC Wiring Resistance: 40W max.W

ENVIRONMENTAL

Operating Temperature: 32°-120°F (0°C - 49°C)

Humidity: 10 to 93% non-condensing)

ORDERING INFORMATION

TR-Monitor-10: 10 Input monitoring module

ACCESSORIES

TR-IDP-ACB: Module Cabinet. 15.25" H x 12.5" W x 3"D

This document is not intended to be used for installation purposes. We try to keep our product information up-to date and accurate. We cannot cover all specific applications or anticipate all requirements. All specifications are subject to change without notice.

TRIGA INVESTMENTS, LLC
340 Taxiway Bravo Beeville, TX 78102,
Tel: +1330-577-5199. Email:info@trigaglobal.com