

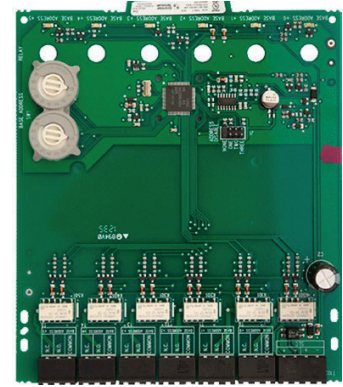


## TR-RELAY-6

### Addressable Relay Module

The TR-RELAY-6 is an addressable relay module for use with Triga Series fire alarm control panels (FACPs). The TR-Relay-6 has six Form C relays. It allows a Triga FACP to switch discrete contacts by code command. If needed, you can disable a maximum of three unused modules on the TR-RELAY-6 board. No supervision is provided for the notification appliance circuit.

The TR-RELAY-6 contacts can be used for virtually any normally open or normally closed application. Each TR-RELAY-6 is programmed with a unique signaling line circuit (SLC) loop address. When an event occurs that controls the TR-RELAY-6, the relay is triggered by the FACP.



**TR-RELAY-6**

#### INSTALLATION

The TR-RELAY-6 mounts in the Triga TR-IDP-ACB cabinet. The TR-IDP-ACB has a built-in chassis that will accommodate one or two TR-RELAY-6 modules.

#### COMPATIBILITY

The TR-RELAY-6 is compatible with the following Triga Series FACPs:

- TR-2100R / ITR-2100B
- TR-2100ECSR / TR-2100ECSB
- TR-R2100R / TR-R2100B

## FEATURES & BENEFITS

- Six Form C contacts
- Removable 12 to 18AWG plug-in terminal blocks
- Relay programming is completely flexible—can be mapped to zone conditions
- Individual LED for each relay contact
- Two module mounting in the TR-IDP-ACB cabinet
- Up to three unused modules can be disabled
- Rotary address switches for fast installation
- Mounting hardware included
- Class A or B operation
- UL Listed
- FM Approved



## Technical Specifications

### SPECIFICATIONS

**Physical:** 6.8" H x 5.8" W x 1.25" D

**Shipping Weight:** 6.3oz (196g)

### ELECTRICAL RATINGS

**Operating Voltage:** 15 to 32VDC

**Standby Current:** 1.6mA maximum

**Alarm Current:** 55mA

**Relay Contact Ratings:**

2.0A @ 25VAC (PF=.35), non-coded

3.0A @ 30VDC resistive, non-coded

2.0A @ 30VDC resistive, coded

0.46A @ 30VDC (L/R=20ms), non-coded

0.7A @ 70.7VAC (PF=.35), non-coded

0.9A @ 125VDC resistive, non-coded

0.5A @ 125VAC (PF=.75), non-coded

0.3A @ 125VAC (PF=.35), non-coded

### ORDERING INFORMATION

**TR-RELAY-6:** Six Relay Module

### ACCESSORIES

**TR-IDP-ACB:** Cabinet. 15.25" H x 12.5" W x 3" D

This document is not intended to be used for installation purposes. We try to keep our product information up-to date and accurate. We cannot cover all specific applications or anticipate all requirements. All specifications are subject to change without notice.

**TRIGA INVESTMENTS, LLC**  
340 Taxiway Bravo Beeville, TX 78102,  
Tel: +1330-577-5199. Email: info@trigaglobal.com